

PLAN VIEW IS FOR ILLUSTRATION ONLY AND DOES NOT DEPICT ACTUAL JOB CONDITIONS

FLORIDA PRODUCT APPROVED 14417.16
RATED FOR USE IN WINDBORN DEBRIS ZONES

LARGE AND SMALL MISSILE COMPLIANT
DESIGN PRESSURE RATING 80 PSF +/-

CUSTOMER VERIFICATION REQUIRED

"REVIEWED" STAMPS ARE NOT ACCEPTED

UNIT(S) DETAILED ARE AS REQUESTED IN THE BID INVITATION. THESE DETAILS ACCURATELY REFLECT THE FIELD DIMENSIONS AND ARE RELEASED FOR FABRICATION.

☐ APPROVED: ☐ REJECTED: ☐ APPROVED AS NOTED (PER REVIEW BY WASCO):

BY: _____ DATE: _____

PLEASE INITIAL SUBSEQUENT SHEETS

GENERAL NOTES:

1) SYSTEM DESIGNED FOR 1-3/16" INSULATING GLASS.

2) SKYLIGHTS ARE DESIGNED TO SUPPORT A MAXIMUM 80PSF POSITIVE/NEGATIVE LOAD PLUS ALL DEAD LOADS WITH MAXIMUM DEFLECTION OF L/175.

3) UNITS ARE SHIPPED KD AND UNGLAZED.

4) SUPPORTING CURB CONSTRUCTION MUST BE CAPABLE OF SUPPORTING ALL HORIZONTAL AND VERTICAL LOADS IMPOSED BY THE SKYLIGHT ONTO THE CURB.

5) INSTALLATION OF SKYLIGHTS IS BY OTHERS.

6) OFF-LOADING OF SKYLIGHTS IS THE RESPONSIBILITY OF THE CUSTOMER.

| MODEL | OD LENGTH | 1st BAY OD TO CL | TYP BAY (48" MAX) | OD WIDTH (73" MAX) | IF PURLINS ARE USED | | UNIT QTY |
|---------|-----------|---------------------|----------------------|-----------------------|---------------------|--------------------|-------------|
| | | | | | OD to CL PURLIN | CL TO CL PURLIN | |
| LPGS-HU | | | | | | | |
| LPGS-HU | | | | | | | |
| LPGS-HU | | | | | | | |

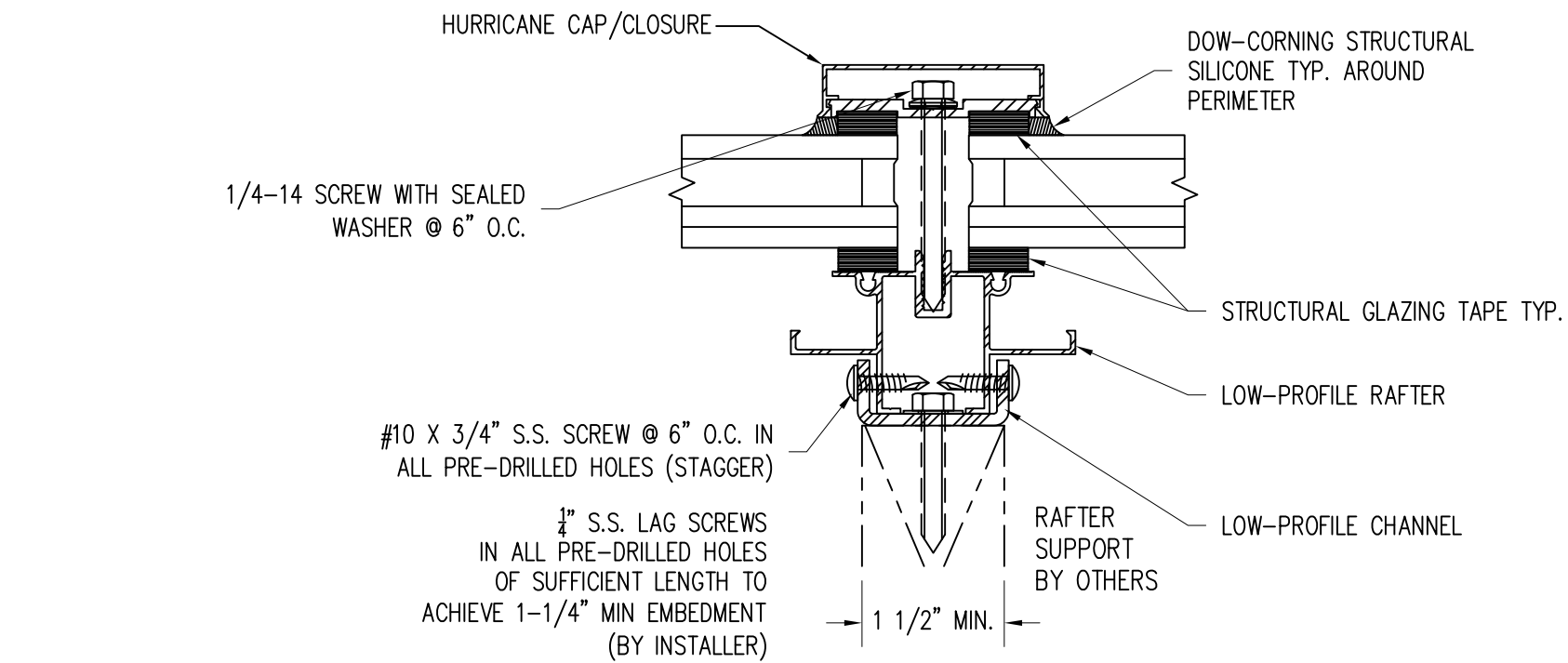
| INSULATING GLASS SPECIFICATION | | GLASS COLOR | |
|-------------------------------------|--|-------------|-------|
| OUTER LAYER (1/4" TEMPERED) | | | |
| 1/2" SPACE FILL | | AIR | ARGON |
| INNER LAYER (7/16" LAMI w .090 SGP) | | | |

| | | | |
|--------------|--------------------|---------------|-------------|
| METAL FINISH | MILL | BLACK ANODIZE | |
| | CLEAR ANODIZE | KYNAR | COLOR _____ |
| | DARK BRZ ANODIZE | BAKED ENAMEL | COLOR _____ |
| | MEDIUM BRZ ANODIZE | | |
| | LIGHT BRZ ANODIZE | | |

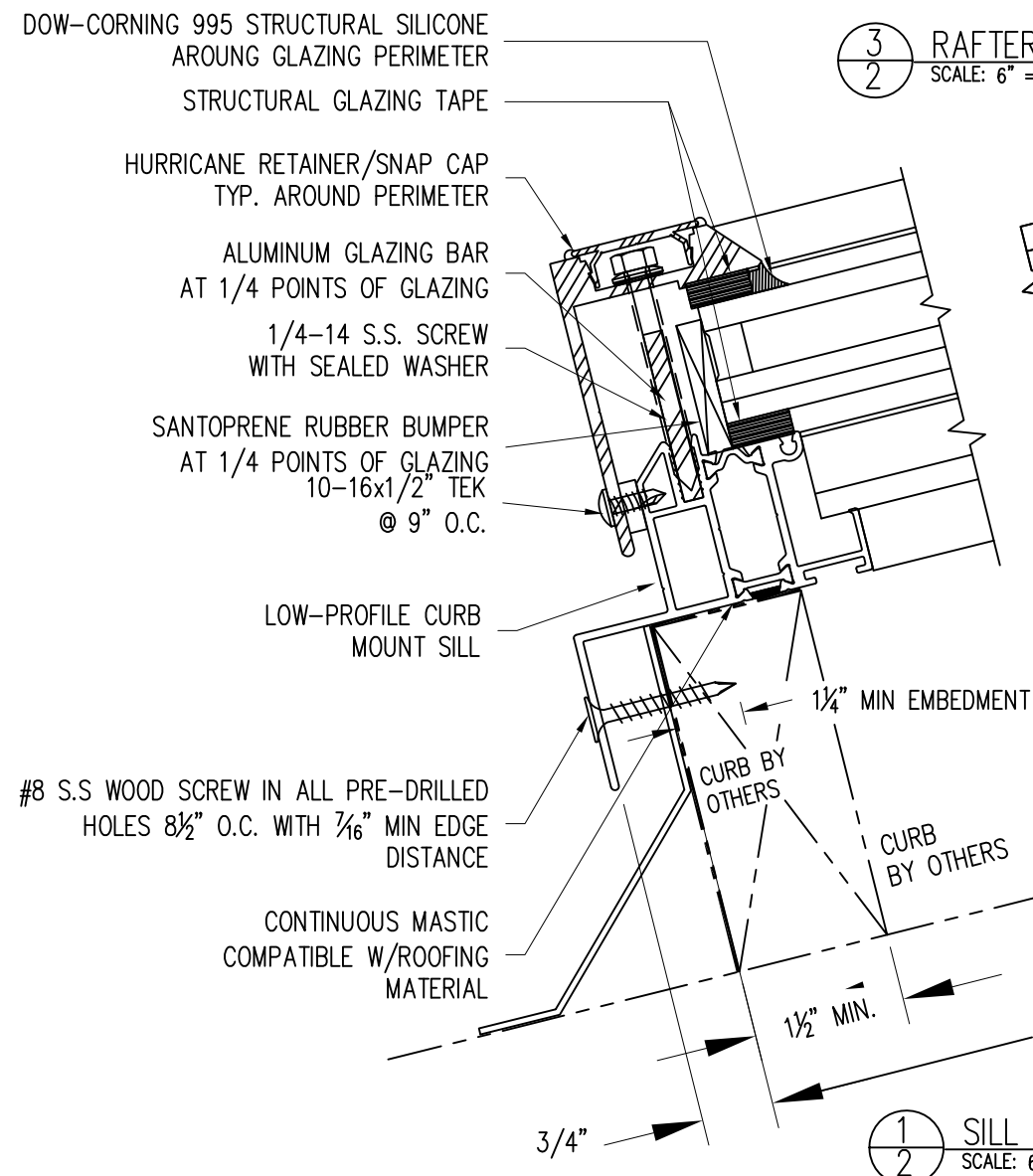
HURRICANE RATED LOW PROFILE GLASS CURB MOUNT-FPA

| | |
|----------------|--|
| SALES ORDER #: | |
| PROJECT NAME: | |
| LOCATION: | |
| CUSTOMER: | |
| WASCO REP: | |

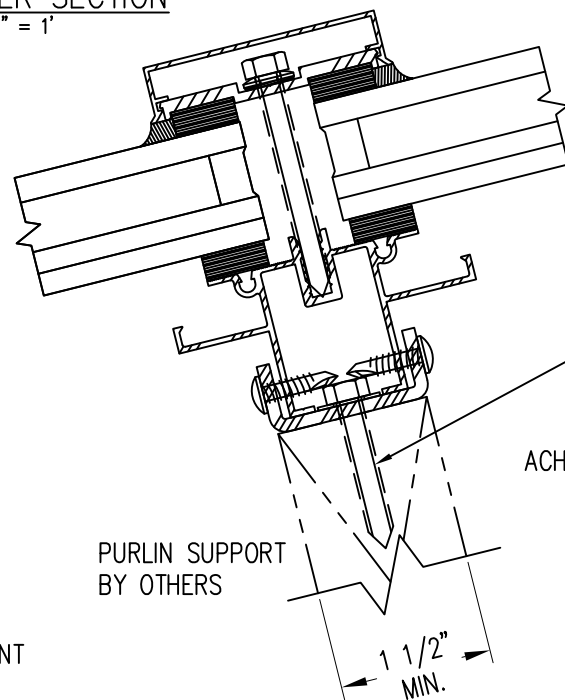
NOTE: THESE DRAWINGS AND THE DESIGNS DEPICTED IN THEM, ARE THE PROPERTY OF WASCO PRODUCTS, INCORPORATED AND CANNOT BE COPIED OR TRANSMITTED IN ANY FORM WITHOUT THE EXPRESS WRITTEN PERMISSION OF SAME.



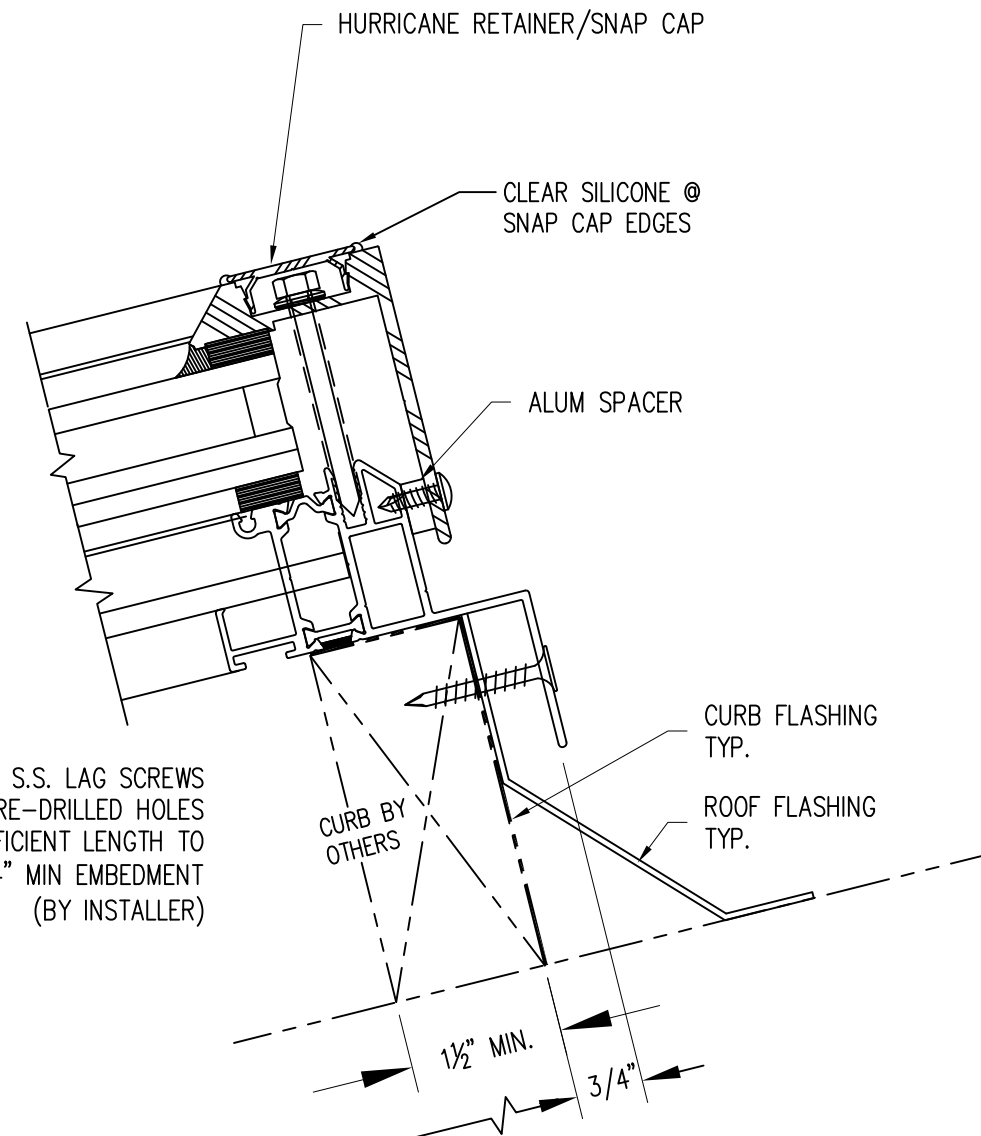
3 RAFTER SECTION
SCALE: 6" = 1'



1 SILL SECTION
SCALE: 6" = 1'



4 PURLIN SECTION
SCALE: 6" = 1'



2 HEAD SECTION
SCALE: 6" = 1'

GENERAL CURB/NAILER NOTE: CURBS/NAILERS SHOWN ARE GENERIC. DESIGN AND FABRICATION OF CURBS/NAILERS IS NOT THE RESPONSIBILITY OF WASCO PRODUCTS. THEY MUST BE ADEQUATE TO RESIST ALL VERTICAL AND HORIZONTAL FORCES THAT MAY BE IMPOSED ON THEM BY THE SKYLIGHT SYSTEM.

| | | | |
|--|------|------------------|--------|
| LPGS-HU - SP LOW PROFILE CURB MOUNT IMPACT RATED | | | |
| CUSTOMER INITIAL | | | |
| Wasco Part of | | VELUX Commercial | |
| 85 Spencer Dr, Unit A Wells, ME 04090 1-800-88-VELUX veluxusa.com | | | |
| ORDER#: | INQ# | REV | SHEET |
| | | A | 2 OF 2 |