

STANDARD RIB SPACING IS 48" TYPICAL WITH BOTH END BAYS EQUAL TO OR LESS THAN 48", BUT EQUAL. CUSTOM BAY SPACING AVAILABLE, NOT TO EXCEED 48"

CUSTOMER VERIFICATION REQUIRED

"REVIEWED" STAMPS ARE NOT ACCEPTED

UNIT(S) DETAILED ARE AS REQUESTED IN THE BID INVITATION. THESE DETAILS ACCURATELY REFLECT THE FIELD DIMENSIONS AND CONDITIONS AND ARE RELEASED FOR FABRICATION.

APPROVED: ☐ REJECTED: ☐ APPROVED AS NOTED (PER REVIEW BY WASCO): ☐

PLEASE INITIAL
SUBSEQUENT SHEETS

BY: _____ TITLE: _____ DATE: _____

GENERAL NOTES:

REV_D

- 1) EXTRUDED ALUMINUM TO BE OF 6063-T5 ALLOY (MINIMUM).
- 2) ALL FASTENERS TO BE 300 SERIES STAINLESS STEEL.
- 3) EXTRUDED ALUMINUM SILLS, RIBS, AND PURLINS TO HAVE A NOMINAL THICKNESS OF .125". EXTRUDED ALUMINUM RETAINERS AND GLAZING CAPS TO HAVE A MINIMUM EFFECTIVE THICKNESS OF .109".
- 4) SKYLIGHTS ARE DESIGNED TO SUPPORT A MINIMUM 40 P.S.F. LIVE LOAD, PLUS ALL DEAD LOADS WITH A MAXIMUM DEFLECTION OF 1/175
- 5) INSTALLATION OF SKYLIGHT(S) – NOT BY WASCO.
- 6) ANY CHANGES THAT OCCUR AFTER APPROVAL OF SKYLIGHT MAY RESULT IN AN ADD TO CONTRACT AND DELAY IN DELIVERY OF SKYLIGHT(S).
- 7) HR UNITS WILL SHIP KD, INSIDE FASTENED, WITH VERTICAL ENDS ASSEMBLED UNLESS QUOTED OTHERWISE.
- 8) OFF-LOADING OF SKYLIGHT OR SKYLIGHT COMPONENTS IS THE RESPONSIBILITY OF THE CUSTOMER
- 9) WASCO RESERVES THE RIGHT TO MAKE CHANGES WITHOUT NOTICE WHEN, IN THE OPINION OF THE COMPANY, SUCH CHANGES IMPROVE THE PRODUCT OR IT'S PERFORMANCE.

| MODEL | OD CURB WIDTH (48" MIN / 123" MAX) | OD CURB LENGTH | NO. OF BAYS | QUANTITY |
|-------|---------------------------------------|----------------|-------------|----------|
| HRVV | | | | |
| HRVV | | | | |
| HRVV | | | | |

| OUTER GLAZING MATERIAL | INNER GLAZING MATERIAL |
|-------------------------|-------------------------|
| ACRYLIC | ACRYLIC |
| IMPACT MODIFIED ACRYLIC | IMPACT MODIFIED ACRYLIC |
| POLYCARBONATE | POLYCARBONATE |

| OUTER GLAZING COLOR | INNER GLAZING COLOR |
|---------------------|---------------------|
| CLEAR | CLEAR |
| 2412 BRONZE | |
| WHITE | WHITE |

| METAL FINISH | MED BRZ ANODIZED |
|-------------------|--------------------------|
| MILL | LIGHT BRZ ANODIZED |
| CLEAR ANODIZED | KYNAR COLOR _____ |
| DARK BRZ ANODIZED | BAKED ENAMEL COLOR _____ |

HALF ROUND BARREL VAULT DOUBLE DOME

| | |
|----------------|--|
| SALES ORDER #: | |
| PROJECT NAME: | |
| LOCATION: | |
| CUSTOMER: | |
| WASCO REP: | |

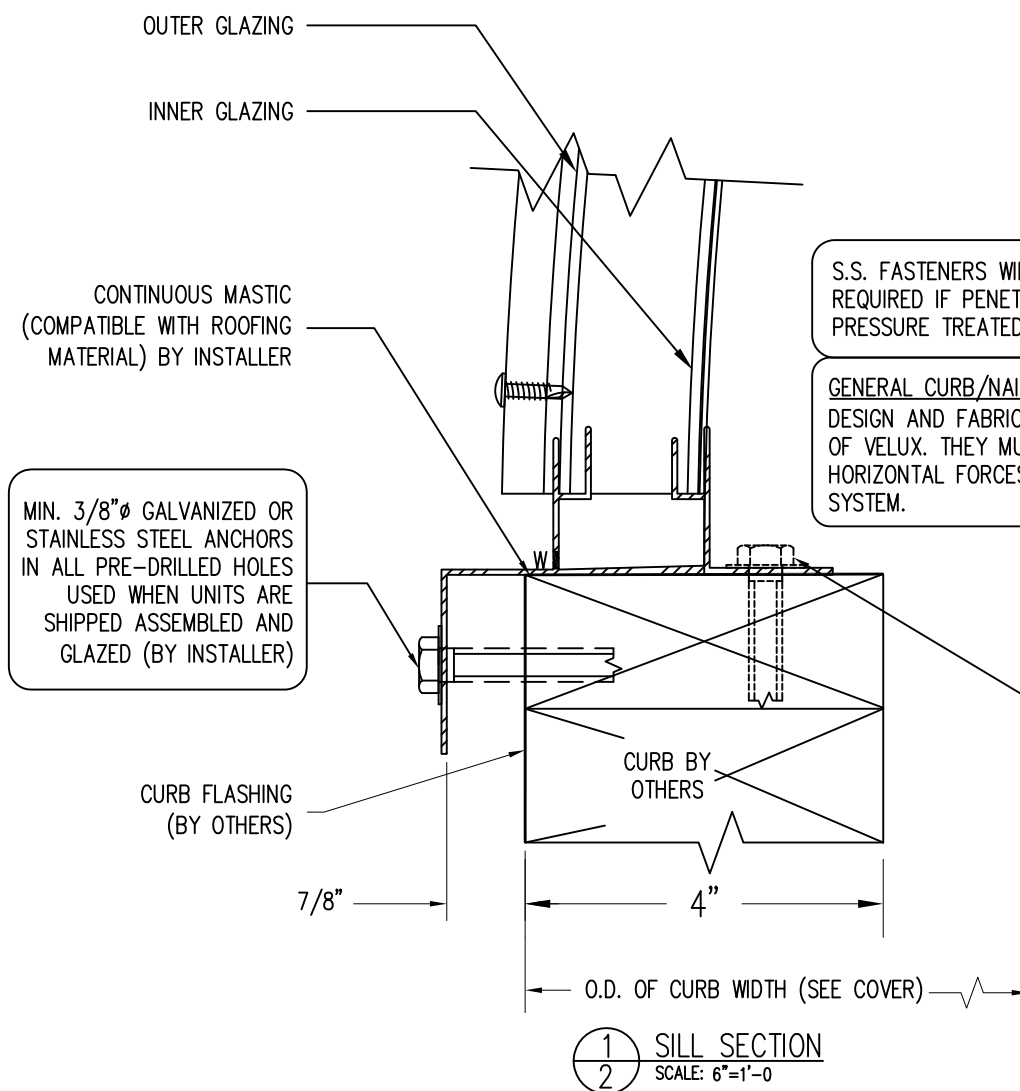
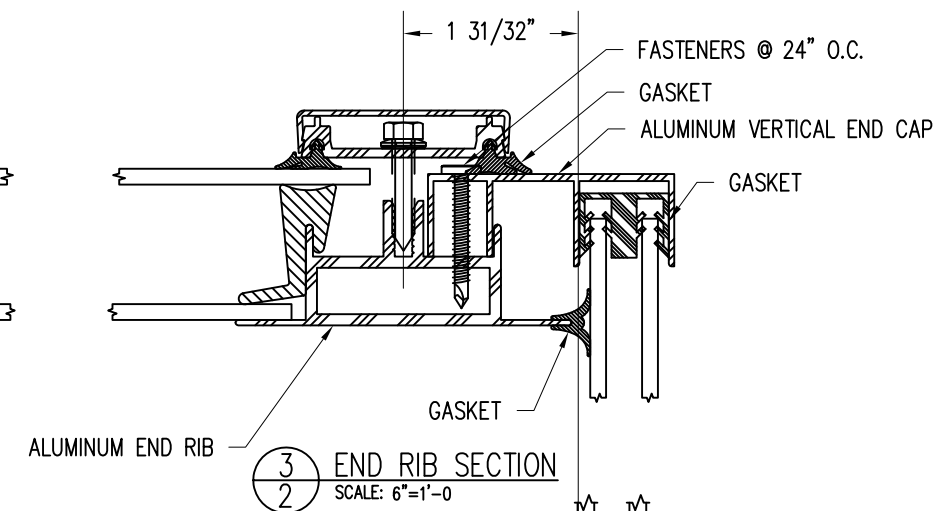
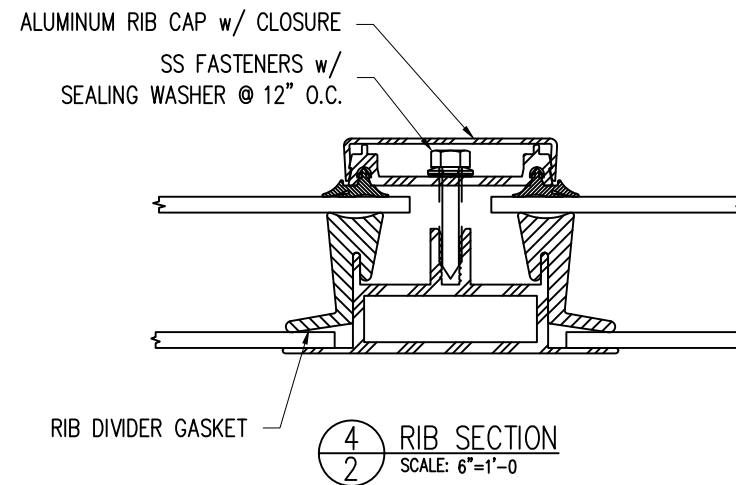
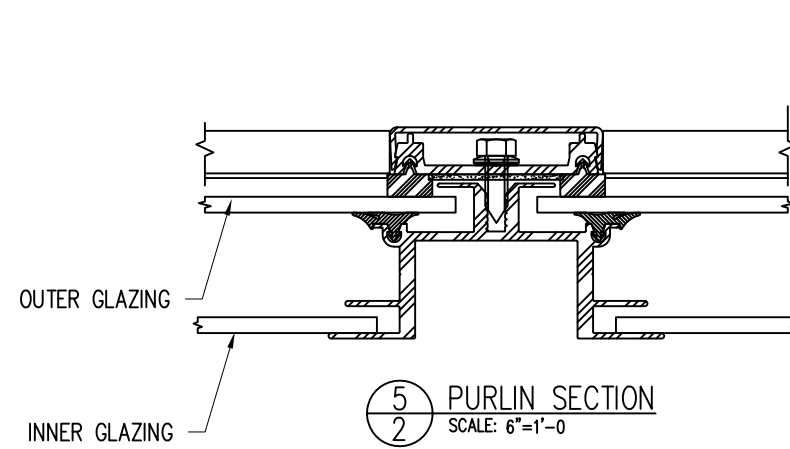
NOTE: THESE DRAWINGS AND THE DESIGNS DEPICTED IN THEM, ARE THE PROPERTY OF VELUX AMERICA, LLC. AND CANNOT BE COPIED OR TRANSMITTED IN ANY FORM WITHOUT THE EXPRESS WRITTEN PERMISSION OF SAME.

SAFETY CONSIDERATIONS: VELUX SKYLIGHTS ARE DESIGNED TO WITHSTAND NORMAL ELEMENTS OF THE WEATHER. THEY ARE NOT DESIGNED TO WITHSTAND HUMAN IMPACT OR FALLING OBJECTS. THESE SKYLIGHTS SHOULD NOT BE WALKED UPON UNDER ANY CIRCUMSTANCES. THE OWNER OR DESIGNER SHOULD RESTRICT ACCESS ONLY TO AUTHORIZED PERSONNEL WHO HAVE BEEN ADEQUATELY CAUTIONED AS TO THE LOCATION OF THE SKYLIGHT AND INFORMED OF THE WARNING ABOVE OR SAID OWNER SHOULD PROVIDE PROTECTIVE GUARDRAILS OR SCREENS AROUND THE SKYLIGHT.



VELUX Wells
85 Spencer Dr, Unit A
Wells, ME 04090
1-800-88-VELUX
veluxusa.com

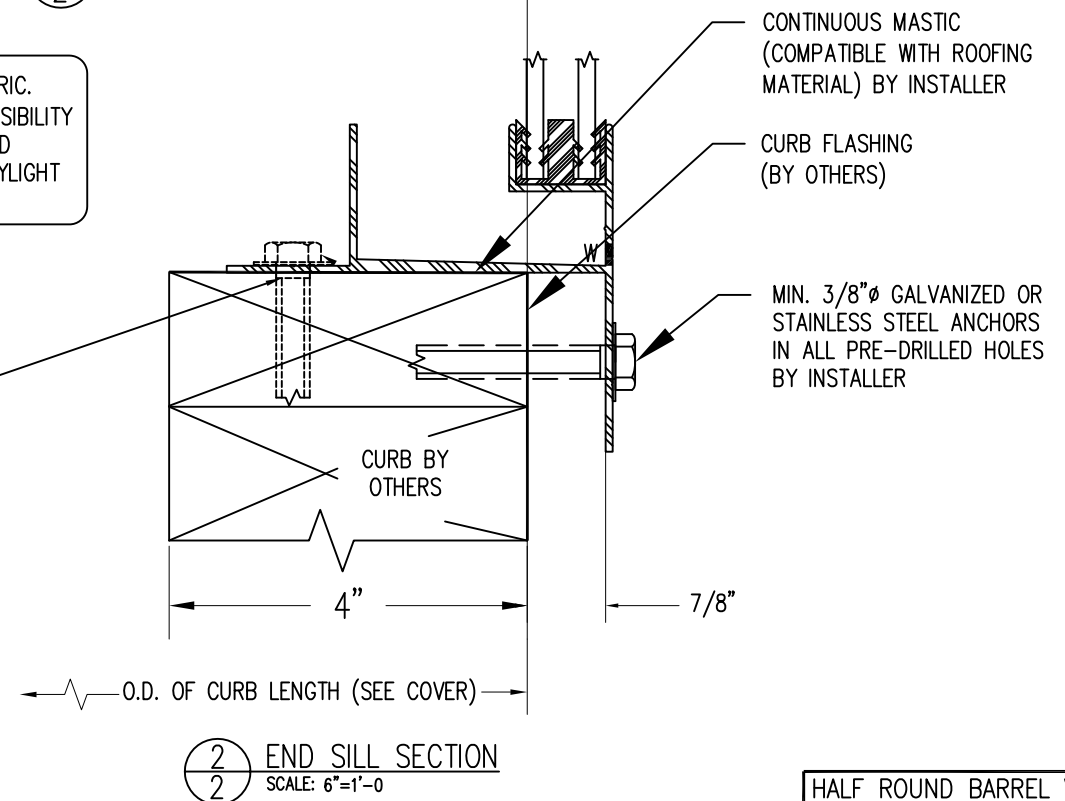
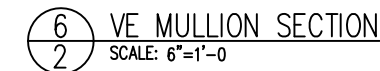




S.S. FASTENERS WILL BE
REQUIRED IF PENETRATING
PRESSURE TREATED WOOD

GENERAL CURB/NAILER NOTE: CURBS/NAILERS SHOWN ARE GENERIC.
DESIGN AND FABRICATION OF CURBS/NAILERS IS NOT THE RESPONSIBILITY
OF VELUX. THEY MUST BE ADEQUATE TO RESIST ALL VERTICAL AND
HORIZONTAL FORCES THAT MAY BE IMPOSED ON THEM BY THE SKYLIGHT
SYSTEM.

3/8" MIN S.S. OR GALV
ANCHOR (BY INSTALLER)
USED WHEN UNITS ARE
SHIPPED KD



HALF ROUND BARREL VAULT DOUBLE DOME

CUSTOMER
INITIAL

Wasco Part of
VELUX Commercial

VELUX Wells
85 Spencer Dr, Unit A
Wells, ME 04090
1-800-88-VELUX
veluxusa.com

| | | | |
|---------|------|-----|--------|
| ORDER#: | INQ# | REV | SHEET |
| | | 0 | 2 OF 2 |