

GENERAL NOTES:

- 1) UNITS ARE AVAILABLE IN 5:12, 7:12 AND 12:12 PITCHES ONLY.
- 2) MAXIMUM AVAILABLE O.D.CURB DIMENSION IS 5'-0".
- 3) SYSTEM DESIGNED FOR 25MM MULTIWALL POLYCARBONATE ONLY.
- 4) SKYLIGHTS ARE DESIGNED TO SUPPORT A MINIMUM 40 psf POSITIVE LOAD PLUS ALL DEAD LOADS WITH MAXIMUM DEFLECTION OF L/175.
- 5) UNITS ARE SHIPPED ASSEMBLED AND UNGLAZED UNLESS QUOTED OTHERWISE. (ASSEMBLED SECTIONS NOT TO EXCEED 20'-0").
- 6) SUPPORTING CURB CONSTRUCTION MUST BE CAPABLE OF SUPPORTING ALL HORIZONTAL AND VERTICAL LOADS IMPOSED BY THE SKYLIGHT ONTO THE CURB.
- 7) INSTALLATION OF SKYLIGHTS IS BY OTHERS.
- 8) OFF-LOADING OF SKYLIGHTS IS THE RESPONSIBILITY OF THE CUSTOMER.

MODEL	OD CURB WIDTH (60" MAX)	OD CURB LENGTH (240" MAX)	# BAYS (ALONG LGTH)	PITCH	QUANTITY
CPYH				5:12	
CPYH				7:12	
CPYH				12:12	

25MM GLAZING OPTIONS:

CLEAR	CLEAR IR	CLEAR LUMIRA
OPAL	OPAL IR	

METAL FINISH

MILL	LIGHT BRZ ANODIZED	
CLEAR ANODIZE	KYNAR	COLOR _____
DARK BRZ ANODIZE	BAKED ENAMEL	COLOR _____
MED BRZ ANODIZE		

CLASSIC EXTENDED PYRAMID 25MM

SALES ORDER #:	
PROJECT NAME:	
LOCATION:	
CUSTOMER:	
WASCO REP:	

NOTE: THESE DRAWINGS AND THE DESIGNS DEPICTED IN THEM, ARE THE PROPERTY OF VELUX AMERICA, LLC. AND CANNOT BE COPIED OR TRANSMITTED IN ANY FORM WITHOUT THE EXPRESS WRITTEN PERMISSION OF SAME.

CUSTOMER VERIFICATION REQUIRED

"REVIEWED" STAMPS ARE NOT ACCEPTED

UNIT(S) DETAILED ARE AS REQUESTED IN THE BID INVITATION.

THESE DETAILS ACCURATELY REFLECT THE FIELD DIMENSIONS AND CONDITIONS.

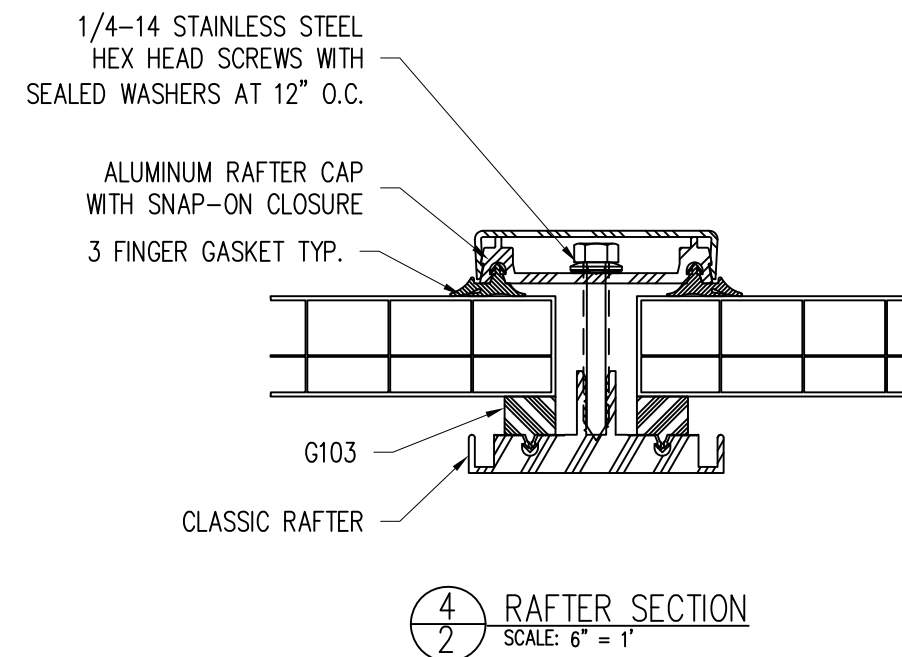
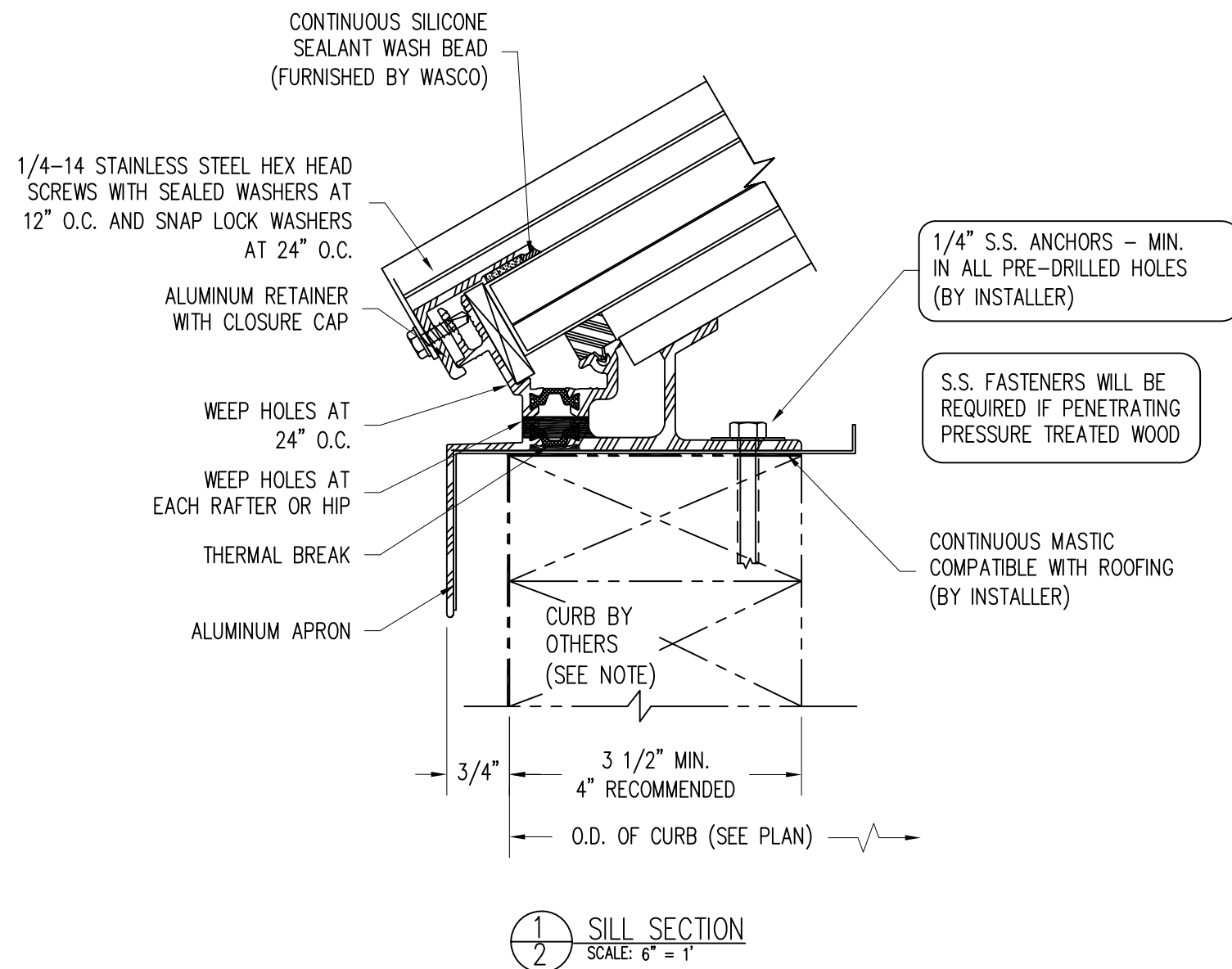
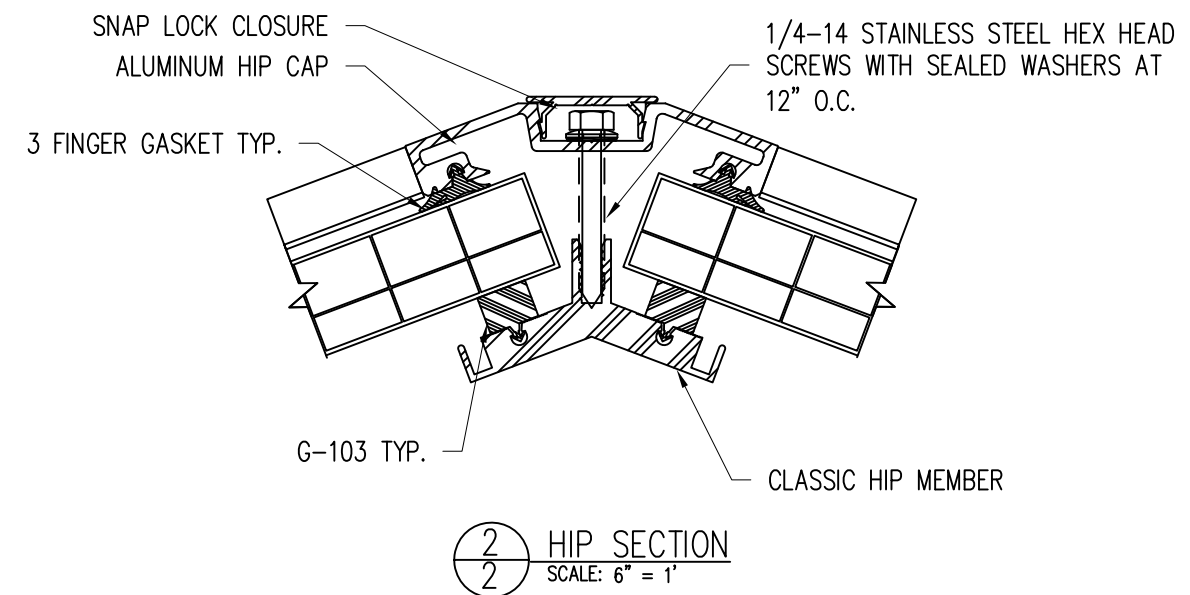
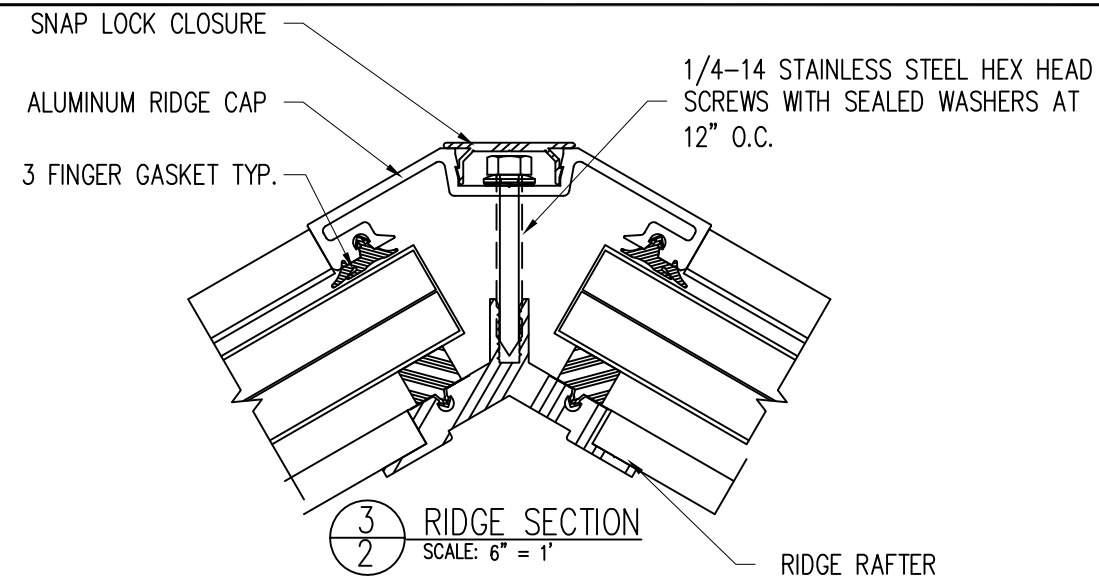
AND ARE RELEASED FOR FABRICATION.

☐ APPROVED:    ☐ REJECTED:    ☐ APPROVED AS NOTED (PER REVIEW BY WASCO):

BY: \_\_\_\_\_ DATE: \_\_\_\_\_

PLEASE INITIAL  
SUBSEQUENT SHEETS

DATE: 1/2019



**GENERAL CURB/NAILER NOTE:** CURBS/NAILERS SHOWN ARE GENERIC. DESIGN AND FABRICATION OF CURBS/NAILERS IS NOT THE RESPONSIBILITY OF WASCO PRODUCTS. THEY MUST BE ADEQUATE TO RESIST ALL VERTICAL AND HORIZONTAL FORCES THAT MAY BE IMPOSED ON THEM BY THE SKYLIGHT SYSTEM.