

GENERAL NOTES:

- 1) UNITS ARE AVAILABLE IN 5:12, 7:12 AND 12:12 PITCHES ONLY.
- 2) MAXIMUM AVAILABLE O.D.CURB WIDTH IS 5'-0".
- 3) SYSTEM DESIGNED FOR 25MM POLYCARBONATE..
- 4) SKYLIGHTS ARE DESIGNED TO SUPPORT A MINIMUM 40 psf POSITIVE LOAD PLUS ALL DEAD LOADS WITH MAXIMUM DEFLECTION OF L/175.
- 5) UNITS ARE SHIPPED ASSEMBLED AND UNGLAZED UNLESS QUOTED OTHERWISE.
- 6) SUPPORTING CURB CONSTRUCTION MUST BE CAPABLE OF SUPPORTING ALL HORIZONTAL AND VERTICAL LOADS IMPOSED BY THE SKYLIGHT ONTO THE CURB.
- 7) INSTALLATION OF SKYLIGHTS IS BY OTHERS.
- 8) OFF-LOADING OF SKYLIGHTS IS THE RESPONSIBILITY OF THE CUSTOMER.

MODEL	OD CURB WIDTH (60" MAX)	OD CURB LENGTH	# BAYS (24" MAX)	PITCH	QUANTITY
CDP				5:12	
CDP				7:12	
CDP				12:12	

25MM GLAZING OPTIONS:

CLEAR	CLEAR IR	CLEAR LUMIRA
OPAL	OPAL IR	

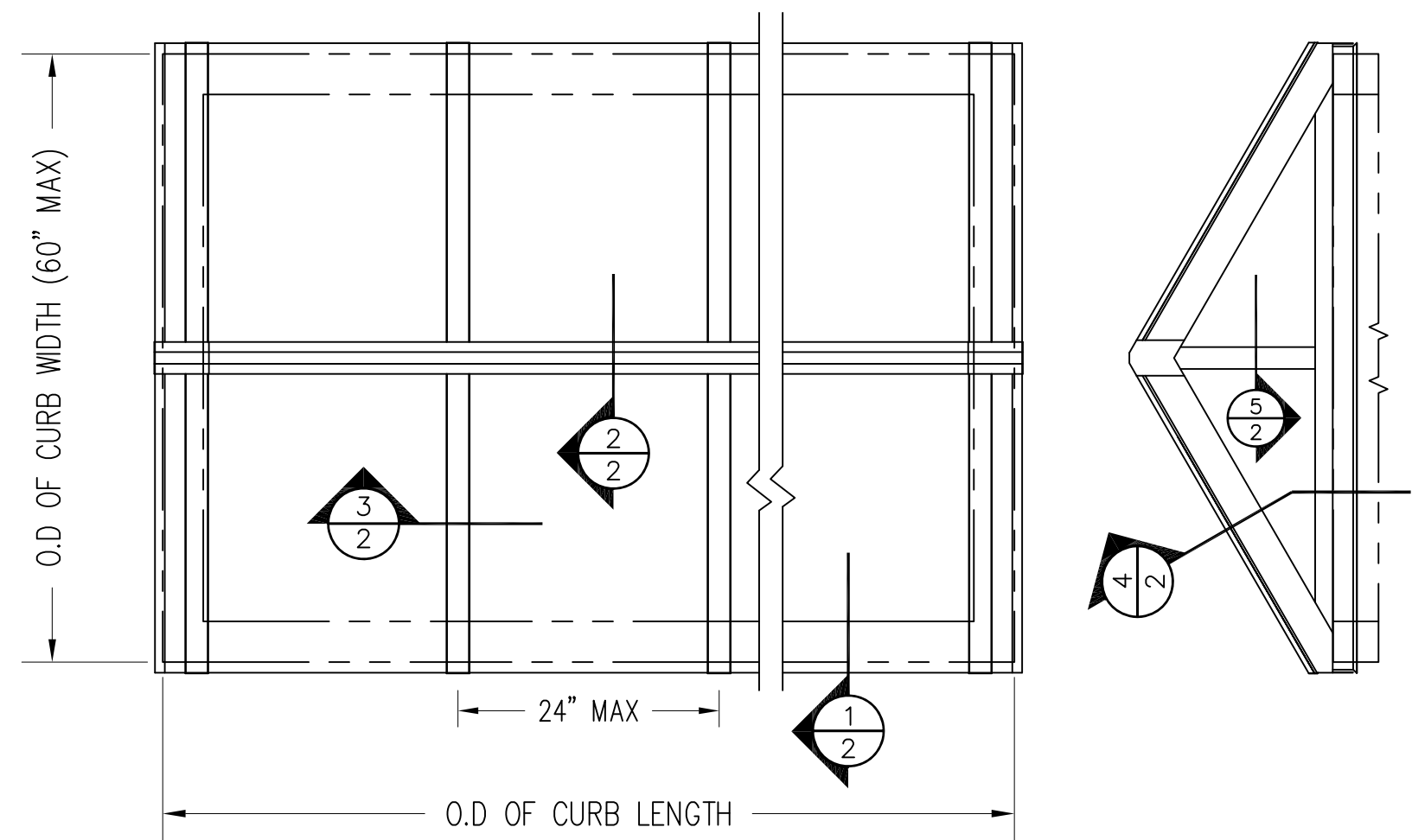
METAL FINISH

MILL	LIGHT BRZ ANODIZED
CLEAR ANODIZE	KYNAR COLOR
DARK BRZ ANODIZE	BAKED ENAMEL COLOR
MED BRZ ANODIZE	

CLASSIC DOUBLE PITCH 25MM

SALES ORDER #:	
PROJECT NAME:	
LOCATION:	
CUSTOMER:	
WASCO REP:	

NOTE: THESE DRAWINGS AND THE DESIGNS DEPICTED IN THEM, ARE THE PROPERTY OF VELUX AMERICA, LLC. AND CANNOT BE COPIED OR TRANSMITTED IN ANY FORM WITHOUT THE EXPRESS WRITTEN PERMISSION OF SAME.



CUSTOMER VERIFICATION REQUIRED

"REVIEWED" STAMPS ARE NOT ACCEPTED

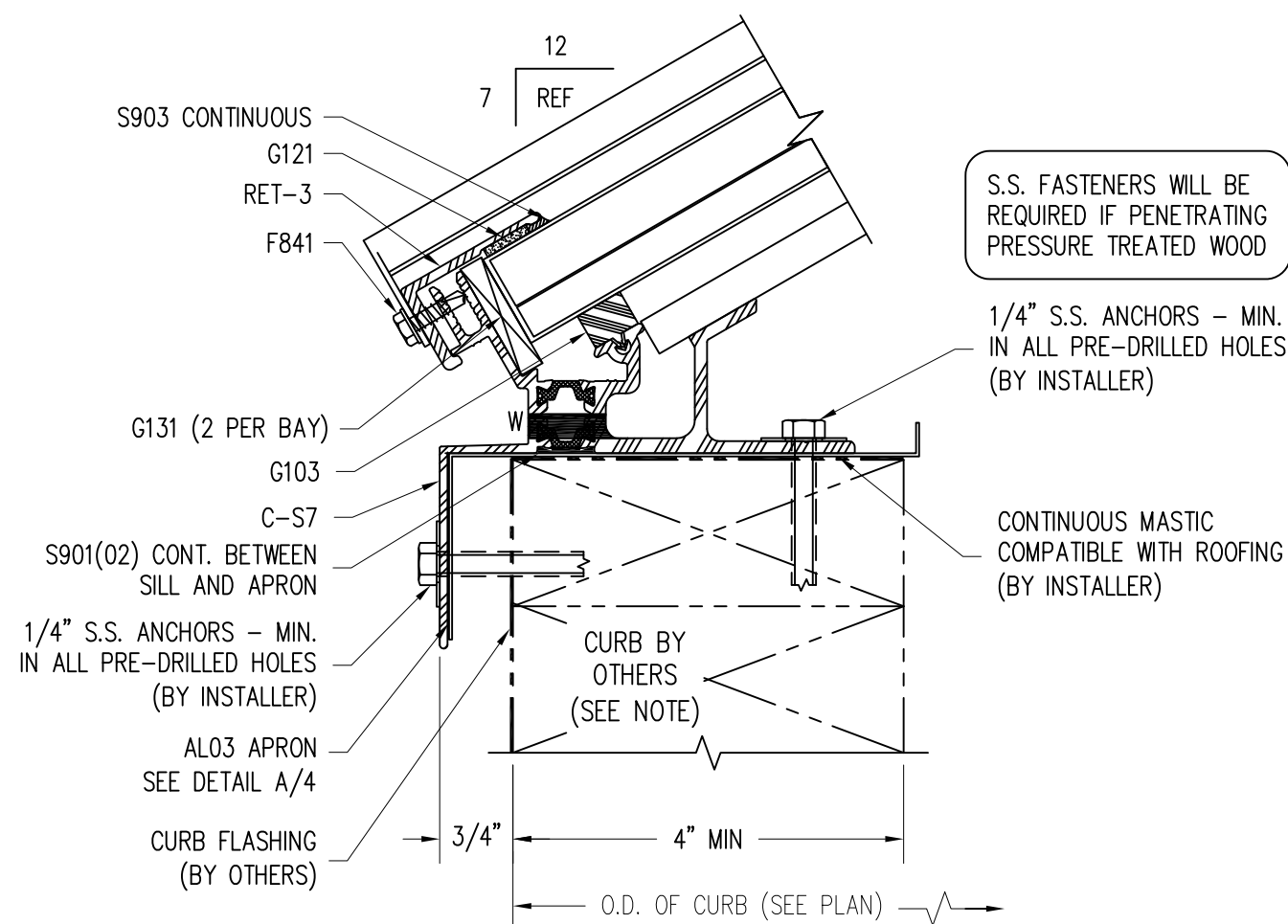
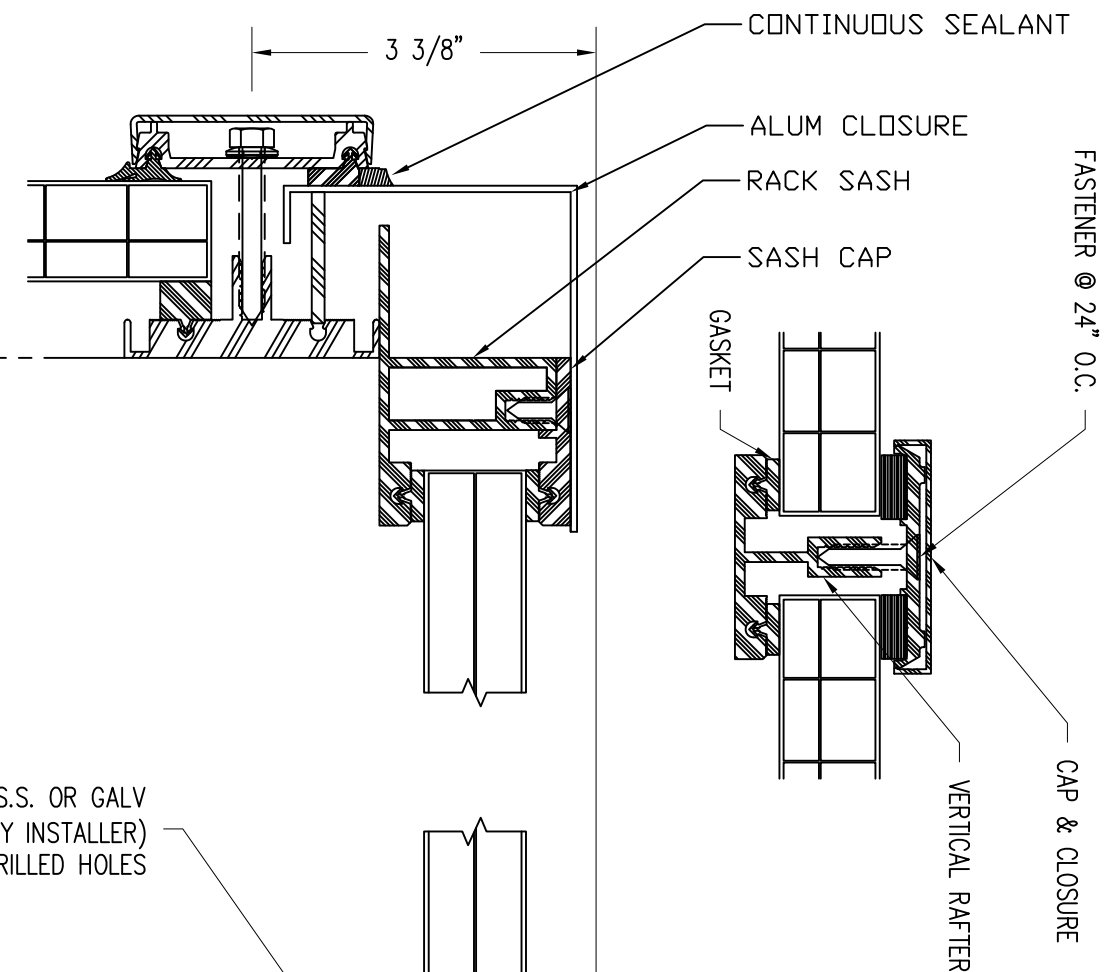
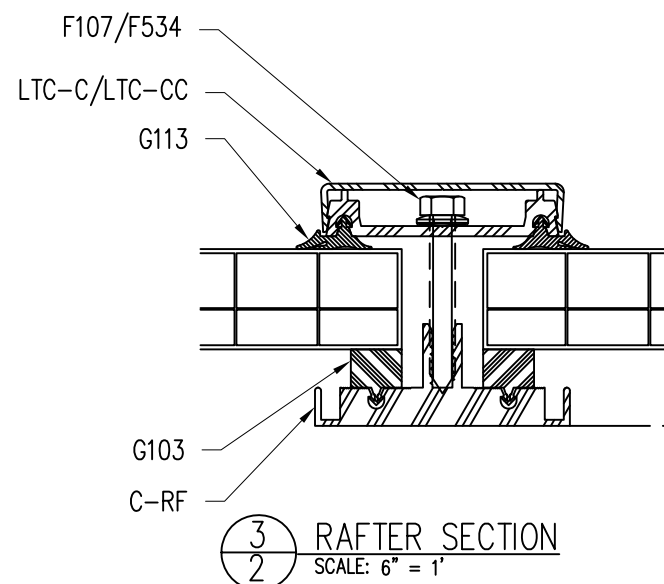
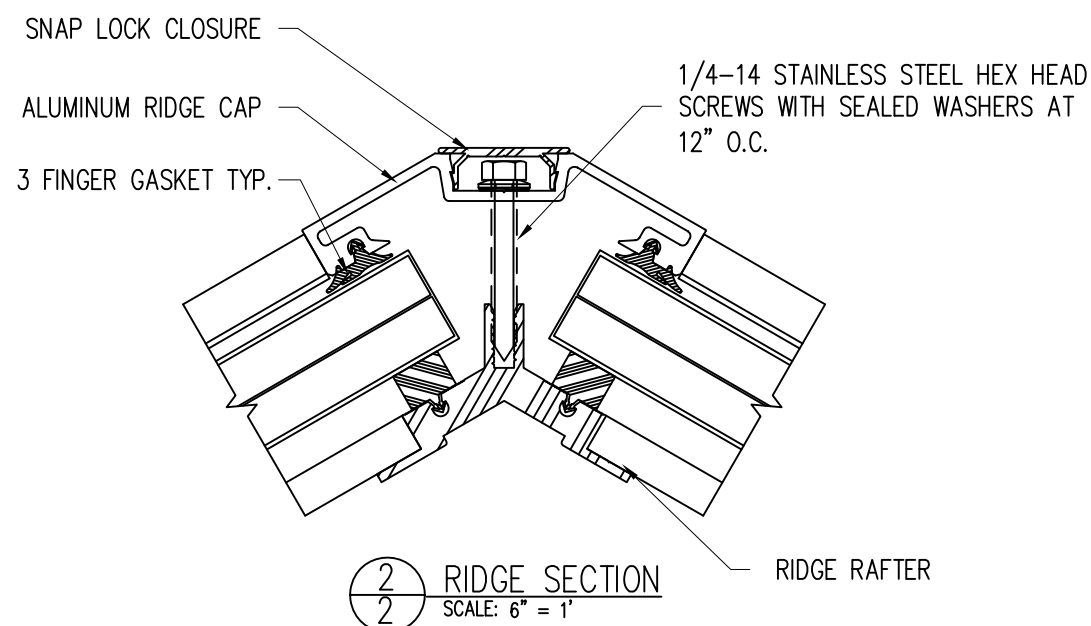
UNIT(S) DETAILED ARE AS REQUESTED IN THE BID INVITATION.
THESE DETAILS ACCURATELY REFLECT THE FIELD DIMENSIONS AND CONDITIONS.
AND ARE RELEASED FOR FABRICATION.

☐ APPROVED: ☐ REJECTED: ☐ APPROVED AS NOTED (PER REVIEW BY WASCO):

BY: _____ DATE: _____

PLEASE INITIAL
SUBSEQUENT SHEETS

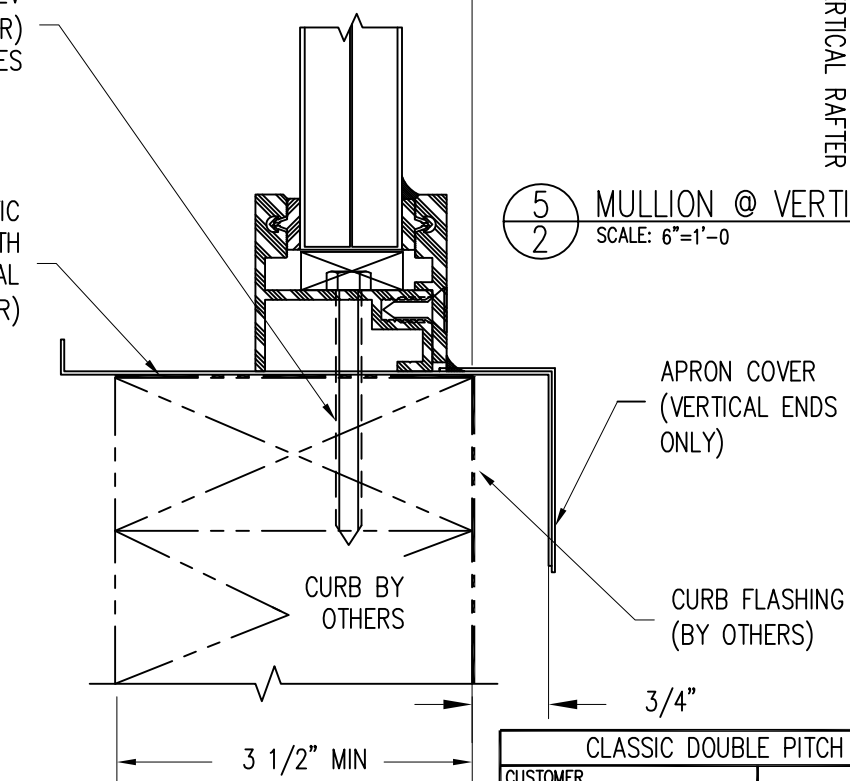
DATE: 6/2018



1/4" MIN S.S. OR GALV
ANCHORS (BY INSTALLER)
IN ALL PRE-DRILLED HOLES

CONTINUOUS MASTIC
COMPATIBLE WITH
ROOFING MATERIAL
(BY INSTALLER)

5
2 MULLION @ VERTICAL END
SCALE: 6"=1'-0"



GENERAL CURB/NAILER NOTE: CURBS/NAILERS SHOWN ARE GENERIC. DESIGN AND FABRICATION OF CURBS/NAILERS IS NOT THE RESPONSIBILITY OF WASCO PRODUCTS. THEY MUST BE ADEQUATE TO RESIST ALL VERTICAL AND HORIZONTAL FORCES THAT MAY BE IMPOSED ON THEM BY THE SKYLIGHT SYSTEM.