

GENERAL NOTES:

- 1) UNITS ARE AVAILABLE IN 5:12, 7:12 AND 12:12 PITCHES ONLY.
- 2) MAXIMUM AVAILABLE O.D.CURB WIDTH IS 5'-0".
- 3) SYSTEM DESIGNED FOR 1½" OR 1⅝" INSULATING GLASS ONLY.
- 4) SKYLIGHTS ARE DESIGNED TO SUPPORT A MINIMUM 40 psf POSITIVE LOAD PLUS ALL DEAD LOADS WITH MAXIMUM DEFLECTION OF L/175.
- 5) UNITS ARE SHIPPED ASSEMBLED AND UNGLAZED UNLESS QUOTED OTHERWISE.
- 6) SUPPORTING CURB CONSTRUCTION MUST BE CAPABLE OF SUPPORTING ALL HORIZONTAL AND VERTICAL LOADS IMPOSED BY THE SKYLIGHT ONTO THE CURB.
- 7) INSTALLATION OF SKYLIGHTS IS BY OTHERS.
- 8) OFF-LOADING OF SKYLIGHTS IS THE RESPONSIBILITY OF THE CUSTOMER.

MODEL	OD CURB WIDTH (60" MAX)	OD CURB LENGTH	# BAYS (24" MAX)	PITCH	QUANTITY
CDP				5:12	
CDP				7:12	
CDP				12:12	

1-1/16" or 1-1/8" INSULATED GLASS SPECIFICATION

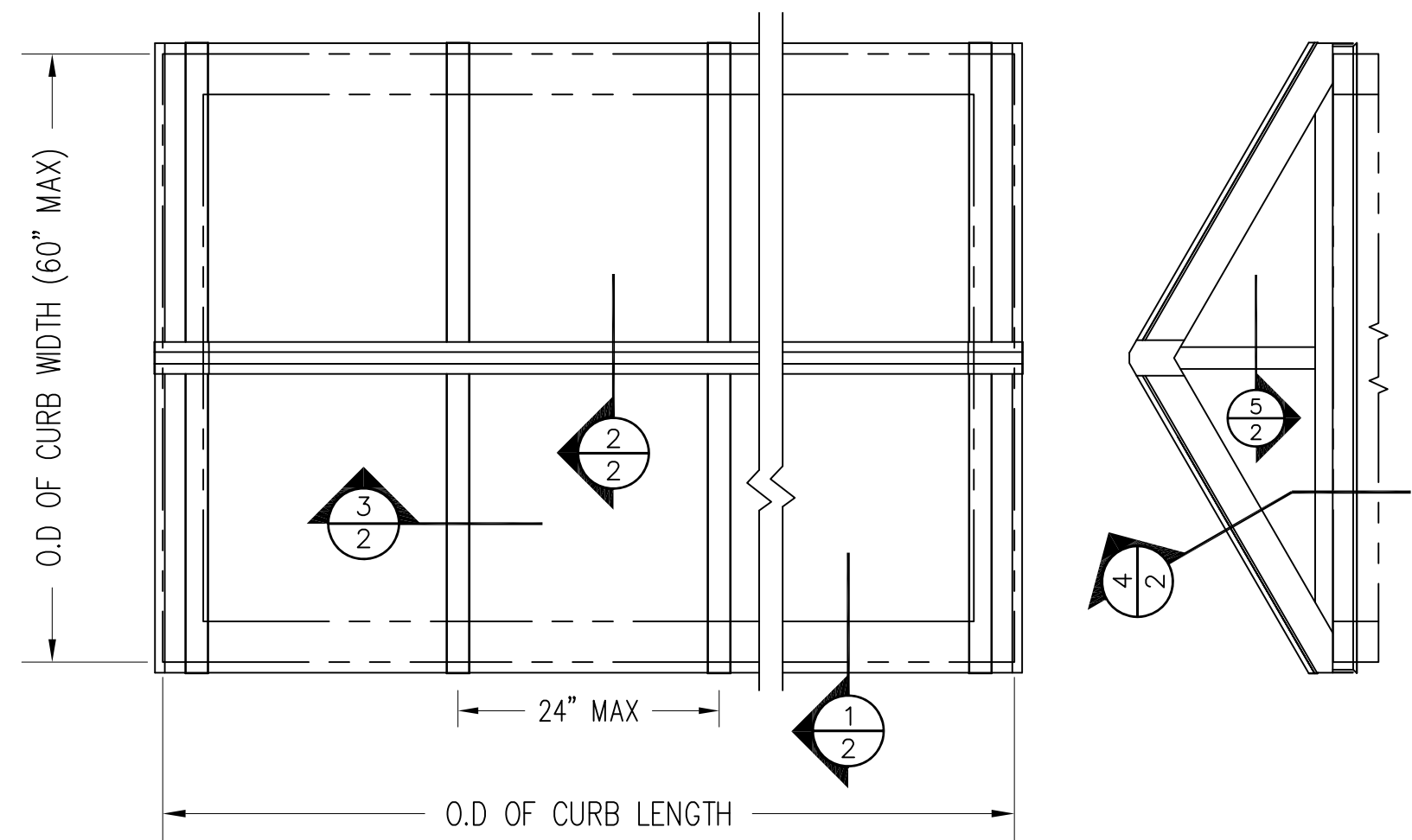
OUTER LAYER		
1/2" SPACE FILL	AIR	ARGON
INNER LAYER		

METAL FINISH		
MILL	LIGHT BRZ ANODIZED	
CLEAR ANODIZE	KYNAR	COLOR _____
DARK BRZ ANODIZE	BAKED ENAMEL	COLOR _____
MED BRZ ANODIZE		

CLASSIC DOUBLE PITCH

SALES ORDER #:	
PROJECT NAME:	
LOCATION:	
CUSTOMER:	
WASCO REP:	

NOTE: THESE DRAWINGS AND THE DESIGNS DEPICTED IN THEM, ARE THE PROPERTY OF VELUX AMERICA, LLC. AND CANNOT BE COPIED OR TRANSMITTED IN ANY FORM WITHOUT THE EXPRESS WRITTEN PERMISSION OF SAME.



CUSTOMER VERIFICATION REQUIRED

"REVIEWED" STAMPS ARE NOT ACCEPTED

UNIT(S) DETAILED ARE AS REQUESTED IN THE BID INVITATION.

THESE DETAILS ACCURATELY REFLECT THE FIELD DIMENSIONS AND CONDITIONS.

AND ARE RELEASED FOR FABRICATION.

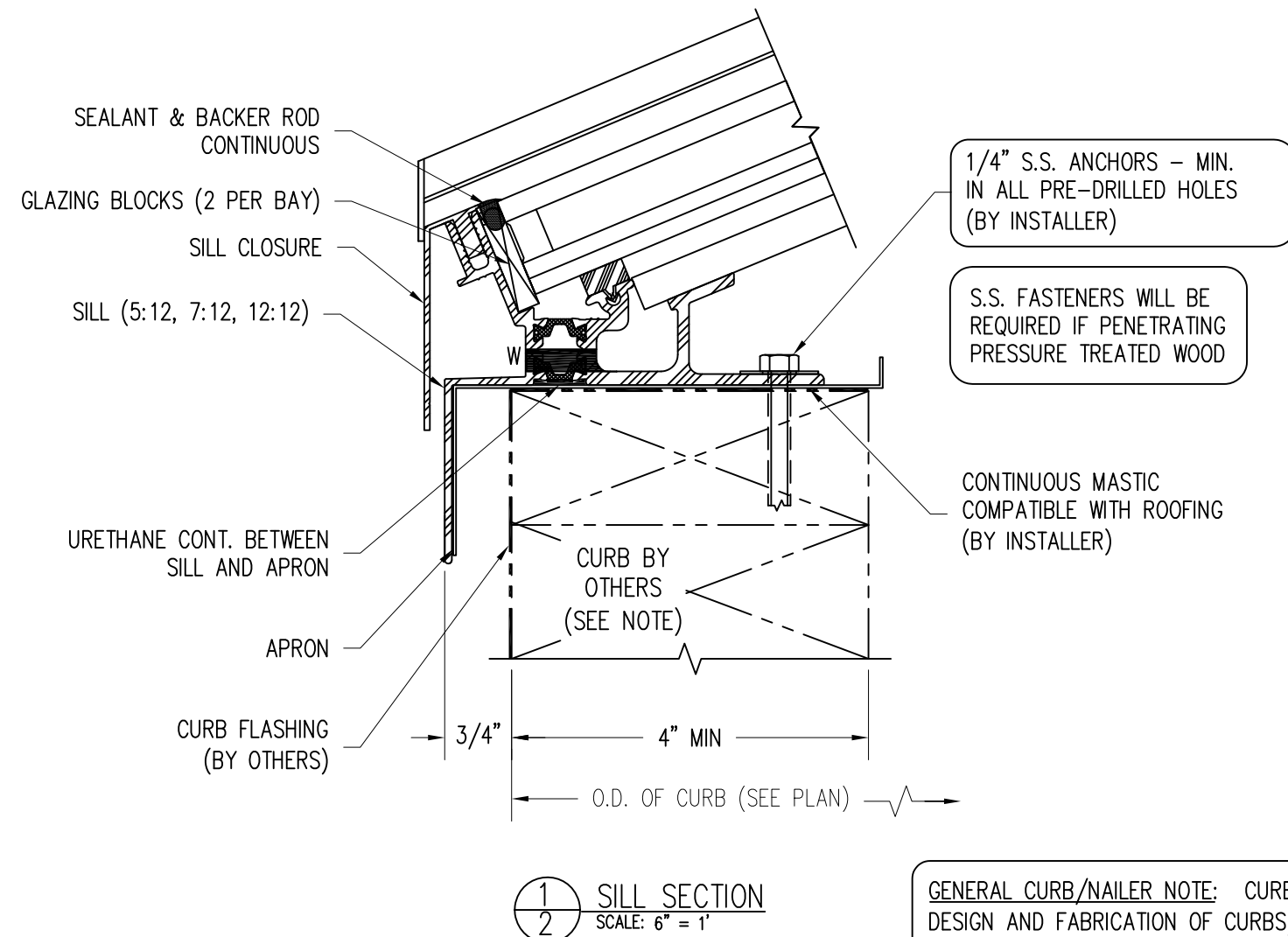
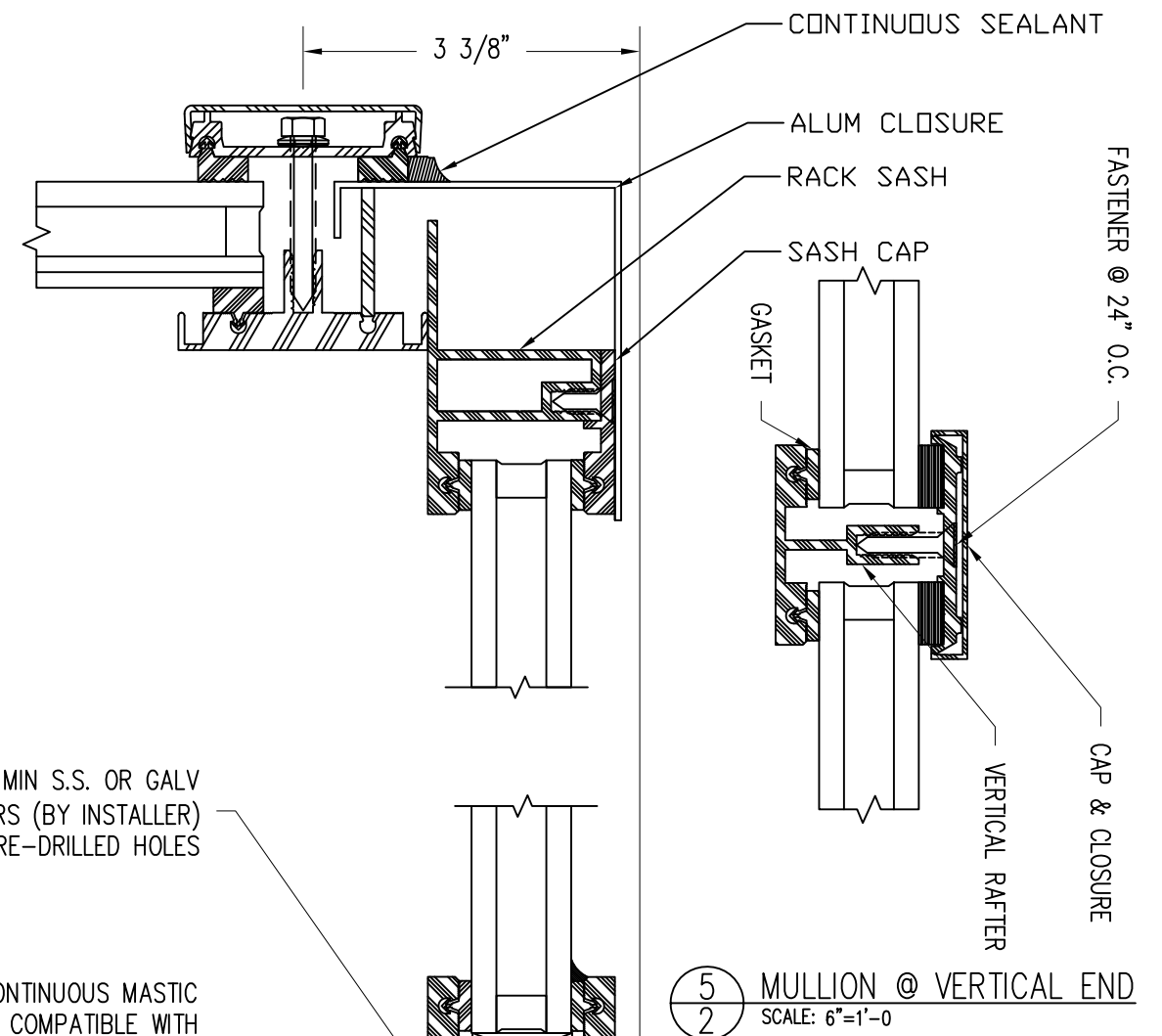
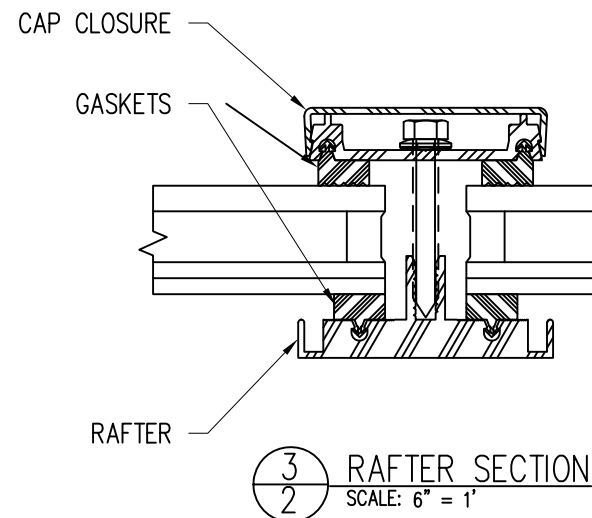
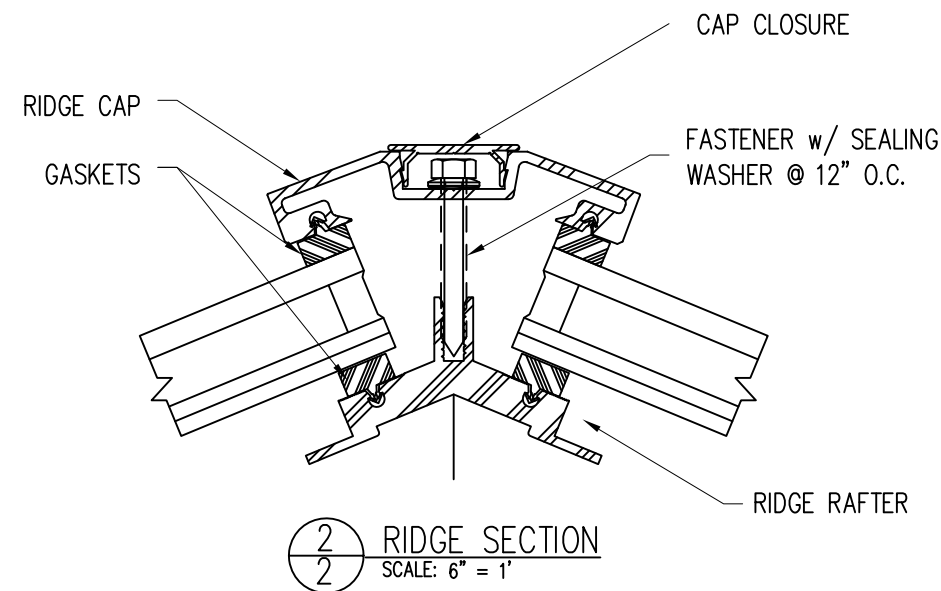
☐ APPROVED:    ☐ REJECTED:    ☐ APPROVED AS NOTED (PER REVIEW BY WASCO):

BY: \_\_\_\_\_ DATE: \_\_\_\_\_

PLEASE INITIAL

SUBSEQUENT SHEETS

DATE: 8/2018



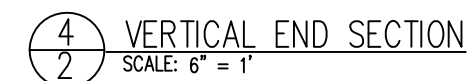
1/4" MIN S.S. OR GALV  
ANCHORS (BY INSTALLER)  
IN ALL PRE-DRILLED HOLES

1/4" S.S. ANCHORS - MIN.  
IN ALL PRE-DRILLED HOLES  
(BY INSTALLER)

S.S. FASTENERS WILL BE  
REQUIRED IF PENETRATING  
PRESSURE TREATED WOOD

CONTINUOUS MASTIC  
COMPATIBLE WITH  
ROOFING MATERIAL  
(BY INSTALLER)

CONTINUOUS MASTIC  
COMPATIBLE WITH ROOFING  
(BY INSTALLER)



APRON COVER  
(VERTICAL ENDS  
ONLY)

CURB FLASHING  
(BY OTHERS)

GENERAL CURB/NAILER NOTE: CURBS/NAILERS SHOWN ARE GENERIC. DESIGN AND FABRICATION OF CURBS/NAILERS IS NOT THE RESPONSIBILITY OF WASCO PRODUCTS. THEY MUST BE ADEQUATE TO RESIST ALL VERTICAL AND HORIZONTAL FORCES THAT MAY BE IMPOSED ON THEM BY THE SKYLIGHT SYSTEM.