

1/4-14 STAINLESS STEEL  
HEX HEAD SCREWS WITH  
SEALED WASHERS AT 12" O.C.

ALUMINUM RAFTER CAP  
WITH SNAP ON CLOSURE

"T" GASKET TYP.

1 1/2" CL OF RAFTER  
TO O.D. OF CURB

CONTINUOUS URETHANE SEALANT  
(FURNISHED BY WASCO)

ALUMINUM SPACER  
WELDED TO RAFTER

.062 ALUMINUM CLOSURE

COMPRESSIBLE FILLER  
(BY INSTALLER)

.032 ALUMINUM APRON

#10 S.D.S.T. SCREWS WITH  
1" BUTYL TAPE AT 24" O.C.

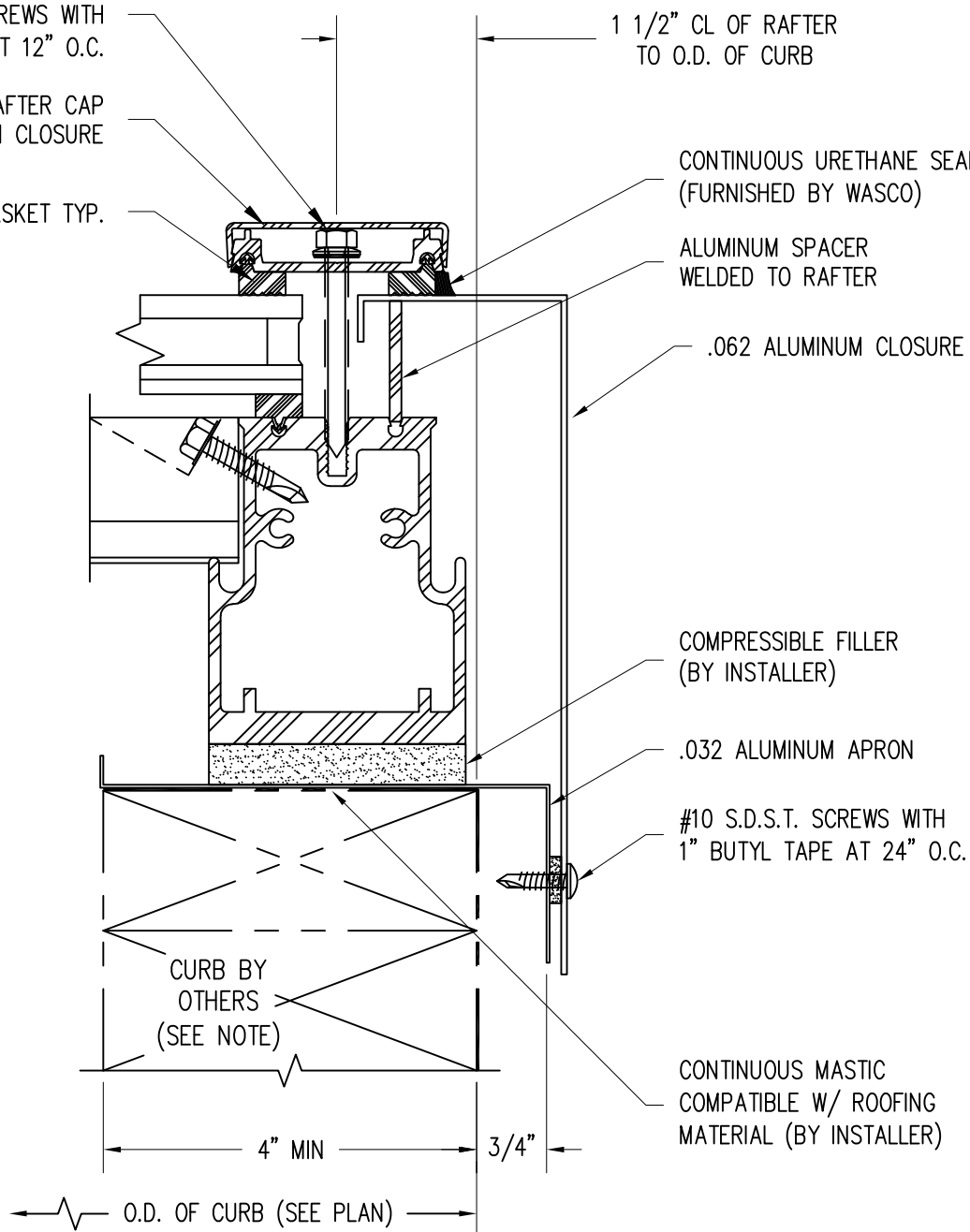
CURB BY  
OTHERS  
(SEE NOTE)

CONTINUOUS MASTIC  
COMPATIBLE W/ ROOFING  
MATERIAL (BY INSTALLER)

4" MIN

3/4"

O.D. OF CURB (SEE PLAN)



**Wasco** Part of  
**VELUX®** Commercial

VELUX Wells  
85 Spencer Dr, Unit A  
Wells, ME 04090  
1-800-88-VELUX  
veluxusa.com

PINNACLE 350  
END RAFTER  
DETAIL

D12